

Chair **CAPRI**

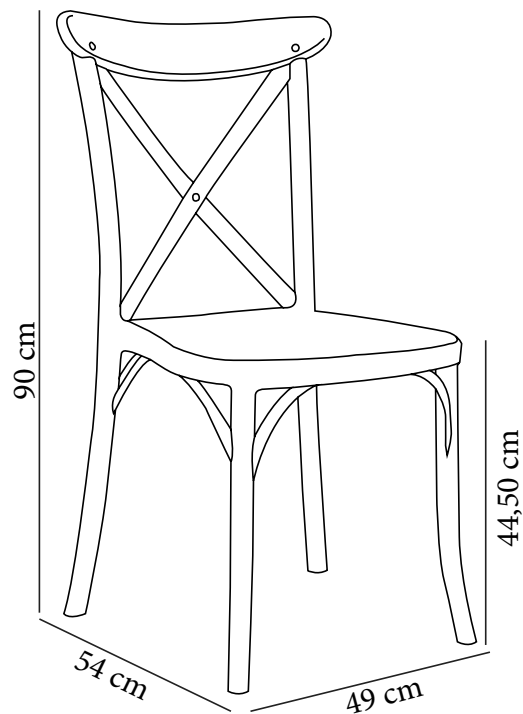
Chair **CAPRI PAD**



Chair Capri



Our hottest new model CAPRI chair is stackable up to ten and is made of 100 % virgin polypropylene applied with gas injection molding. Capri is a monoblock chair with a surface that is slightly wooden textured, light but sturdy at the same time. The characteristic X back is suitable for indoor & outdoor use, in kitchens, restaurants, hotels, gardens, terraces and pool sides. The high-resistant feet have interchangeable PVC footers. It is available in various colors and you can choose the combination that you prefer.



Weight (crtn)

Net : 3,90 kg

Gross : 4,70 kg

Loading Info (crtn)

20' DC : 244 pcs

40' DC : 508 pcs

40' HC : 612 pcs

90 cbm truck : 724 pcs

Packaging Details (crtn)

4 pcs - 50X68X130 cm - 0,44 cbm

Weight (stack)

Net : 3,90 kg

Gross : 4,35 kg

Loading Info (stack)

20' DC : 420 pcs

40' DC : 840 pcs

40' HC : 980 pcs

90 cbm truck : 1250 pcs

Packaging Details (stack)

12 pcs - 50X73X235 cm - 0,86 cbm / 20'DC

14 pcs - 50X73X260 cm - 0,95 cbm / 40'HC

15 pcs - 63X90X280 cm - 1,00 cbm / Truck

Colour Options



Ivory White
101020379



Cream
101010228



Coffee
101020381



Nile Green
101020380



Wenge
101020377



Black
101020375

Colour Options



Tile Red
101020231



Wood
101020378



Red
101020229



Olive Green
101020384



Light Blue
101020385

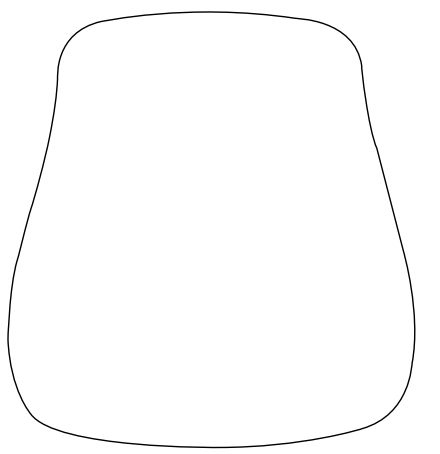


Turquoise
101020386

Chair Capri Pad



Our hottest new model CAPRI chair is stackable up to ten and is made of 100 % virgin polypropylene applied with gas injection molding. Capri is a monoblock chair with a surface that is slightly wooden textured, light but sturdy at the same time. The characteristic X back is suitable for indoor & outdoor use, in kitchens, restaurants, hotels, gardens, terraces and pool sides. The high-resistant feet have interchangeable PVC footers. It is available in various colors and you can choose the combination that you prefer.



37 cm

40 cm



- Plastic underneath seat
- 3 cm 28-HD gray sponge
- Attachable with velcro strip
- Pad thickness : 4 cm
- Pad weight : 0,9 kg
- Pad dimensions : 37x40x4 cm

Weight (crtn)

Net : 4,80 kg

Gross : 5,60 kg

Loading Info (crtn)

20' DC : 244 pcs

40' DC : 508 pcs

40' HC : 612 pcs

90 cbm truck : 724 pcs

Packaging Details (crtn)

4 pcs - 50X68X130 cm - 0,44 cbm

Colour Options



Black
101010239



Coffee
101010240



Ivory White
101010238



Nile Green
101010241



Tile Red
101010242



Wood
101010243



Olive Green
101010244



Red
101010245



Wenge
101010246



Light Blue
101010247



Turquoise
101010248



Cream
101010239

Akron Fabric Options (Indoor)



Akron 59



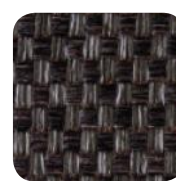
Akron 101



Akron 55



Akron 43



Akron 10



Akron 42



Akron 01



Akron 32



Akron 28



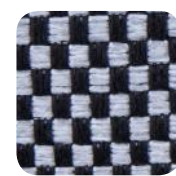
Akron 37



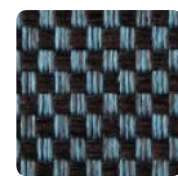
Akron 05



Akron 35



Akron 34



Akron 44



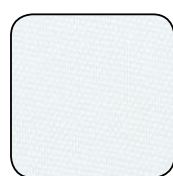
Akron 36



Akron 30

70 % Olefin + 30 % Polyester
 Test ISO 12945-2 (Pilling)
 ISO 13936-2 (Seam Slippage)
 ISO 12947-2 (Abrasion)
 ISO 105x12 (Rubbing)

Waterproof Fabric Options (Outdoor)



WR 01



WR 02



WR 03



WR 04



WR 05



WR 06



WR 07



WR 08



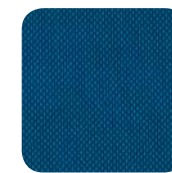
WR 09



WR 10



WR 11



WR 12

% 100 Polyester
 PU waterproof layer
 - It should be wiped gently and circular with a damp cloth

Artificial Leather Fabric Options (Outdoor)

Plain



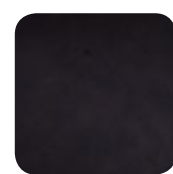
PU 01



PU 02



PU 03



PU 04

Wicker



PU 05



PU 06



PU 07



PU 08

Diamond



PU 09



PU 10



PU 11



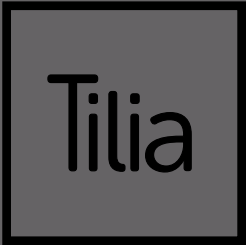
PU 12

- Nature and human friendly products can be produced by without using toxic chemicals which harm human health.

- To remove oil stains: use a soapy cotton cloth and gently rub the stain with circular movements. After that use a clean, humid cloth to wipe off the area and dry the surface.

- To remove dust: use a vacuum cleaner or a soft brush.

Test ISO 2286-1
 ISO 1421-1
 ISO 12947-2-4
 ISO 13937-2
 ISO 105-B02
 ISO 13936-1-2



Savaş Plastik A.Ş.

Beysan Sanayi Sitesi Birlik Caddesi No:18
34524 Beylikdüzü, İstanbul, Türkiye

T: + 90 850 346 65 65 **W:** www.tilia.com.tr

T: + 90 212 422 34 06 **E:** info@tilia.com.tr

F: + 90 212 422 46 25